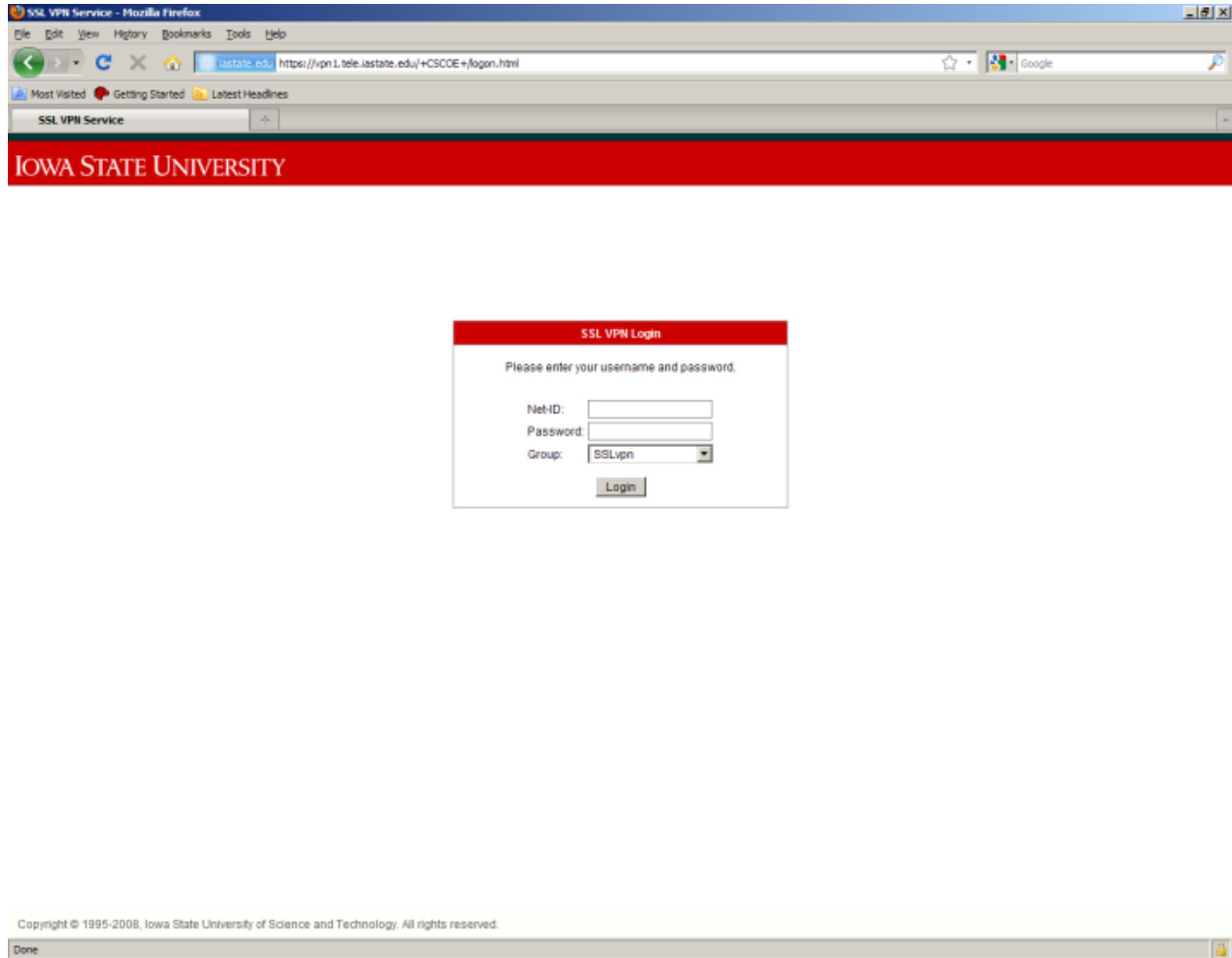


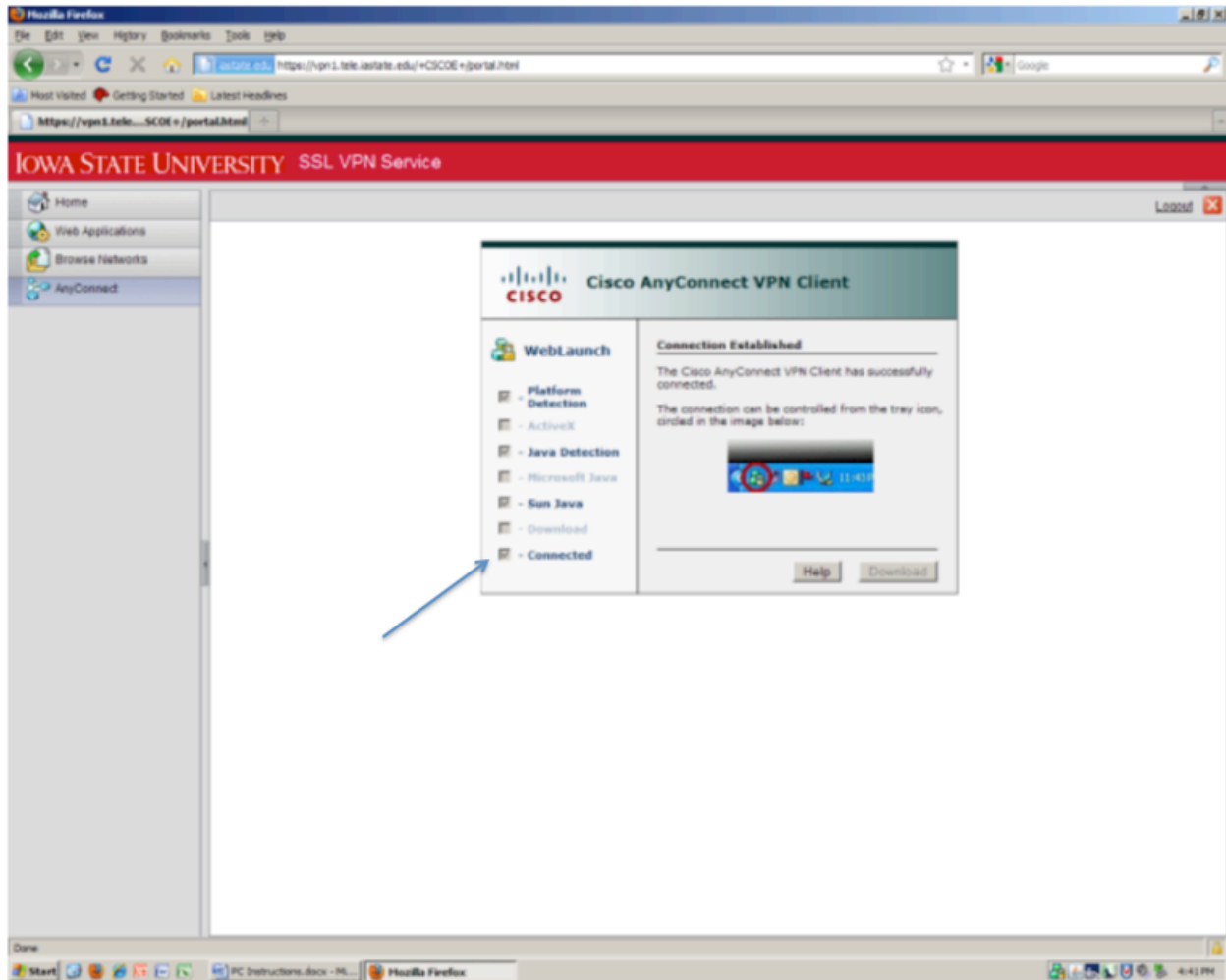
## Remote Desktop Connection Instructions for PC users:

**Step 1: Open your favorite web browser and go to [vpn.iastate.edu](https://vpn1.iastate.edu) (Log in using your ISU NetID, then wait for the connection to be established.)**



After you log in, this window below will appear. The first time you log in it will try to install some Java applets, these **must** be installed for it to work. This usually requires that you have admin privileges to your systems.

If the VPN installs and connects there will be a check box near the bottom that will have a check mark in it. (See arrow below)



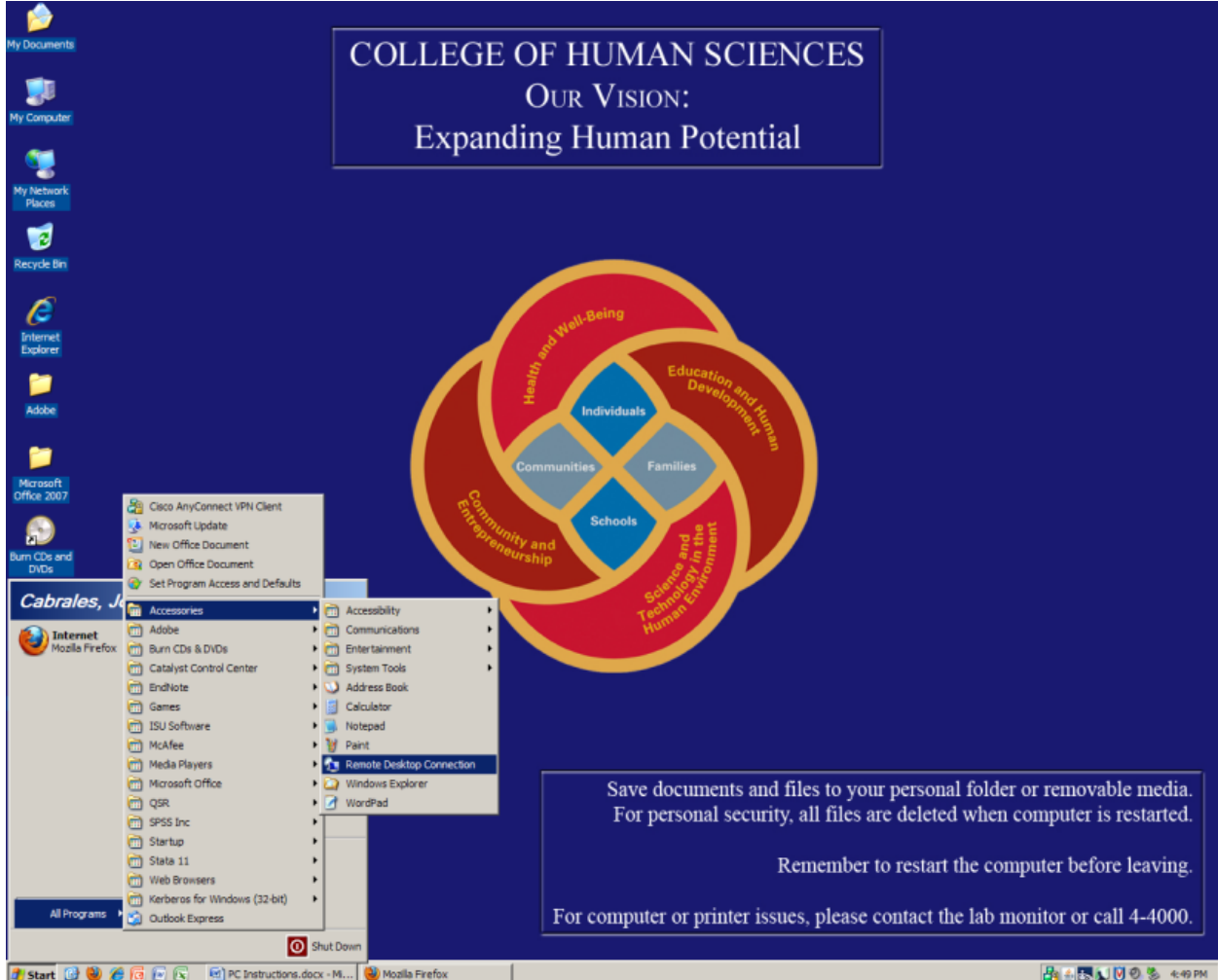
## Step 2: Open Remote Desktop

Click **Start** (at the bottom left of your screen)

Click on **Programs**

Click on **Accessories**

Click on **Remote Desktop Connection** (See Below)



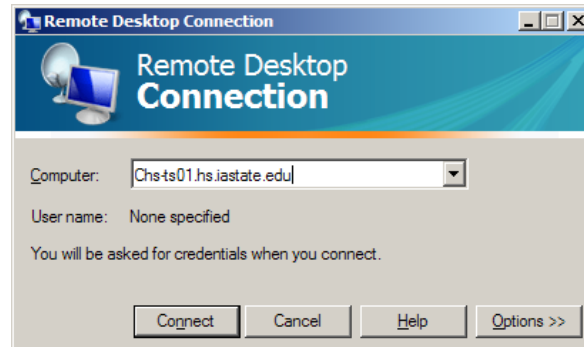
The screenshot shows a Windows XP desktop environment. The desktop background is dark blue with the text "COLLEGE OF HUMAN SCIENCES" and "OUR VISION: Expanding Human Potential" at the top. A central graphic features four overlapping circles labeled "Health and Well-Being", "Education and Human Development", "Community and Entrepreneurship", and "Science and Technology in the Human Environment", with "Individuals", "Communities", "Families", and "Schools" in the center. The Start menu is open, showing "All Programs" expanded to "Accessories", where "Remote Desktop Connection" is highlighted. The taskbar at the bottom shows the Start button, several open applications including "PC Instructions.docx" and "Mozilla Firefox", and the system tray with the time "4:49 PM".

Save documents and files to your personal folder or removable media.  
For personal security, all files are deleted when computer is restarted.

Remember to restart the computer before leaving.

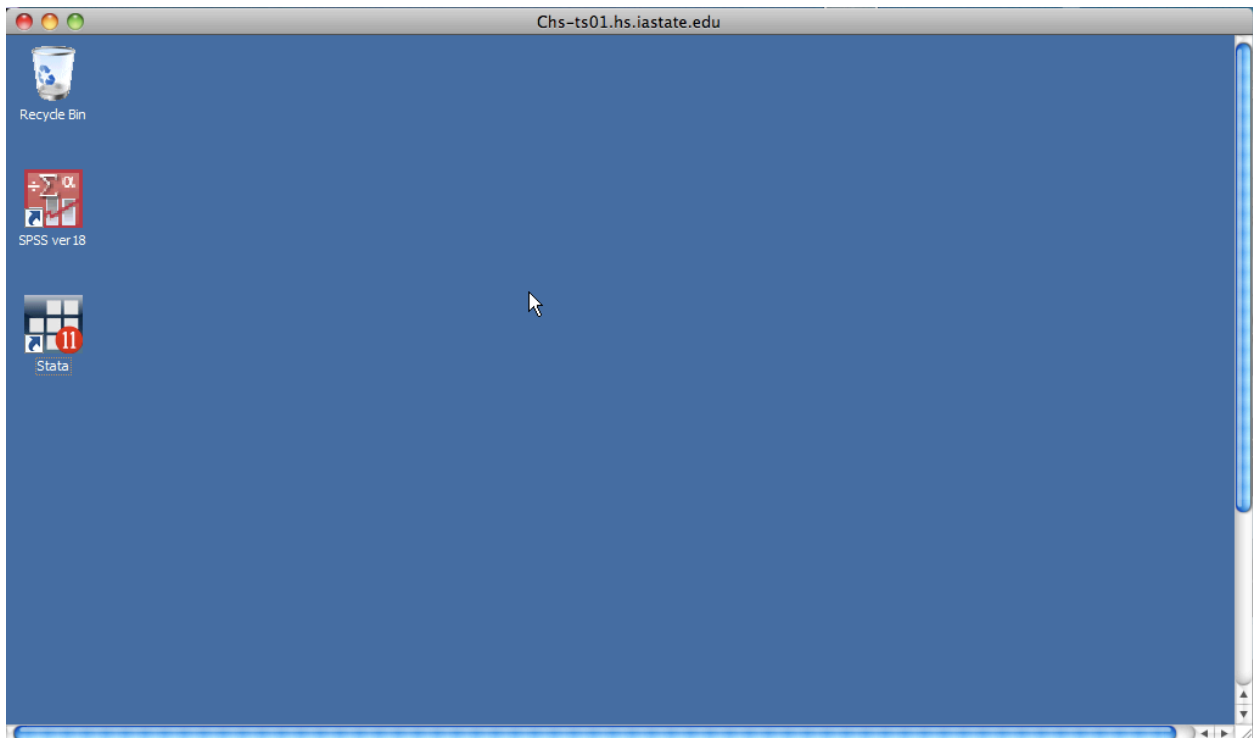
For computer or printer issues, please contact the lab monitor or call 4-4000.

**Step 3: You will be prompted for the server name. Enter Chs-ts01.hs.iastate.edu then click Connect:**  
(Note: that is a zero after the Chs- ts)



**Step 4: Enter your ISU NetID as the username:** (You may need to add iastate\ in front of your NetID) and enter your password

**Step 5: You should now be connected** and should see the remote desktop screen below. Double-click on the Stata icon to begin using Stata



## Troubleshooting:

If you need to install Java it is available here <http://www.java.com/en/download/manual.jsp>

If Java installs and fails to connect to the server close the window and follow these steps (for Vista, Windows 7 and maybe XP):

### **Before you Connect - Add to Trusted Sites**

Adding a security appliance to the list of trusted sites is required for Internet Explorer 7.0 or later on Windows Vista. We also recommend the procedure for others to eliminate certain security pop-up messages when you connect.

Internet Explorer on Vista has "Protected Mode" enabled by default. Adding the security appliance to the trusted sites allows communications with the security appliance, even though "Protected Mode" is enabled.

To add the security appliance to the list of trusted sites:

1. Choose Internet Options. To do so, use either of the following methods:
  - o Choose Start > (Settings >) Control Panel > Internet Options.
  - o Open Internet Explorer and choose Tools > Internet Options.
2. Click the Security tab.
3. Click the Trusted sites icon, then click the Sites button below.
4. Using the http:// or https:// prefix, type the host name or IP address of the security appliance in Trusted Sites window. To maximize connectivity, use a wildcard such as [http://\\*.iastate.edu](http://*.iastate.edu), [https://\\*.iastate.edu](https://*.iastate.edu)
5. Click Add.
6. Click OK.
7. Click OK on the Security tab.
8. Try the VPN again